

MARINE TERRACE

ABERYSTWYTH

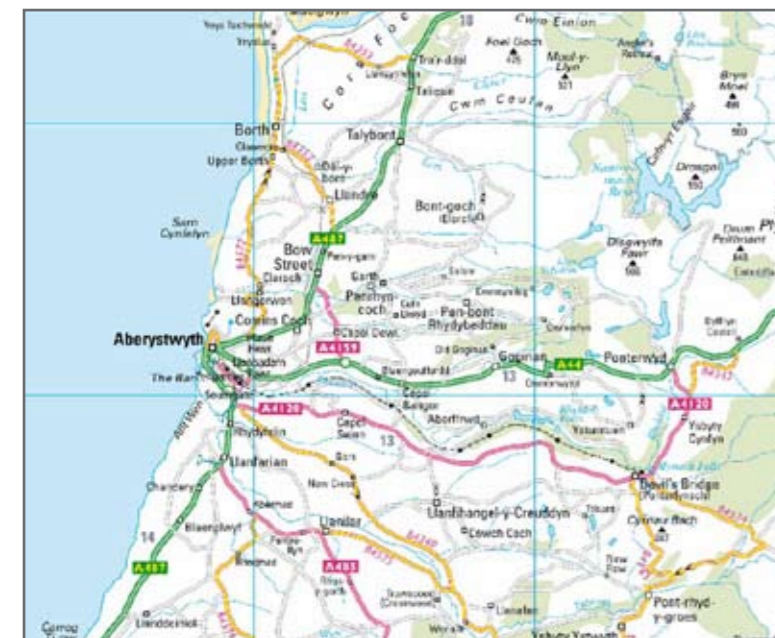
www.marineterrace.co.uk



7 Marine Terrace

A fabulous collection of seafront one and two bedroom apartments boasting stylish, contemporary interiors whilst retaining Victorian features occupying a prominent position on Aberystwyth's famous promenade

Prices from **£135,000**



Developer:



CHARTLAND

The Pavilion • Murivance • Shrewsbury • SY1 1JW

Tel: **01743 245 000**

Estate Agent:



Cambrian Chambers • Terrace Road • Aberystwyth • SY23 1NY

Tel: **01970 636000**

IMPORTANT NOTICE

1. The particulars are set out as a general outline only for the guidance of the intended purchasers or lessees and do not constitute, nor constitute part of, an offer or contract.
2. All descriptions, reference to condition and necessary permissions for use and occupation and other details are given in good faith and are believed to be correct but any intending purchasers or lessees should not rely on them as statements or representation of fact but satisfy themselves by inspection or otherwise as to the correctness of each of them.
3. No person in the employment of Chartland has any authority to make or give any representation or warranty whatsoever in relation to this property.
4. All rentals and prices are quoted exclusive of Stamp Duty, legal and surveyors fees and any other associated purchasers or lessees costs.
5. Floor plans are indicative only and should not be relied on.
6. All dimensions, floor areas and site areas are only approximate and should not be relied on.
7. Dimensions are generally maximum room dimensions.
8. The developer reserves the right to change the layout, specification or price of any of the apartments.

FLOOR PLANS

SPECIFICATIONS



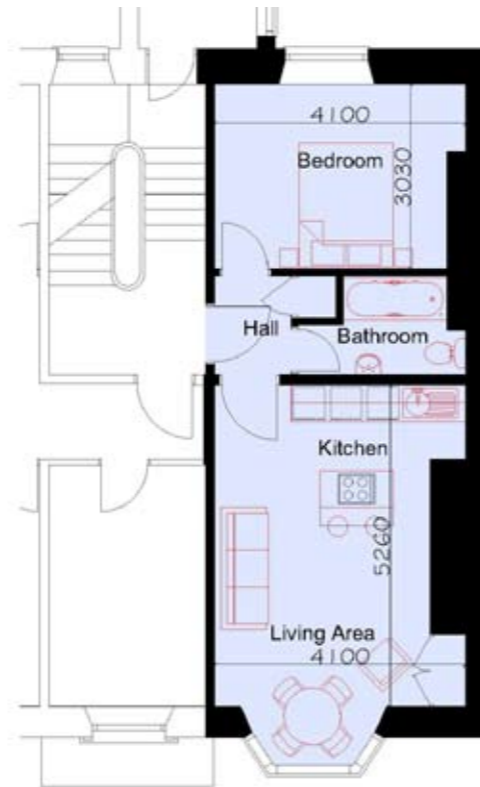
Type 1



Type 2



Type 3



Type 4

- High quality contemporary German kitchens
- Stainless steel oven and ceramic hob
- Integrated fridge/freezer and dishwasher
- White bathroom suites with Grohe showers
- Porcelain floor and wall tiles in the bathroom
- Dalsouple flooring in kitchen area
- Door entry phone
- Fitted carpets
- Efficient electric heating
- Sky satellite aerial system
- Feature fireplace
- Communal landscaped courtyard

